

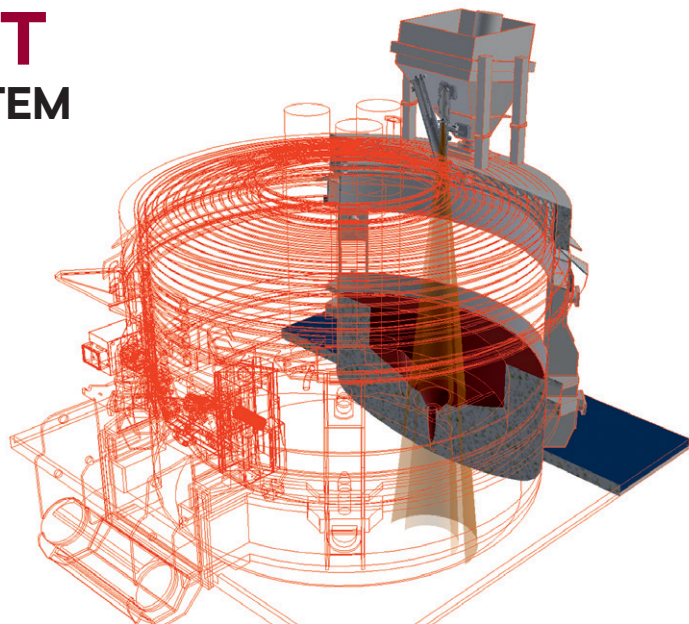


HTT Engineering, spol. s r.o.  
Cimburkova 567/10  
Brno 612 00, Czech Republic  
IC: 03055035 DIC (VAT) CZ03055035

# HTT TAPEYE™ OBT/RBT

## TAP HOLE AUTOMATIC FILLING SYSTEM

Safe and fast way to inspect and fill OBT/RBT tap hole from EAF roof

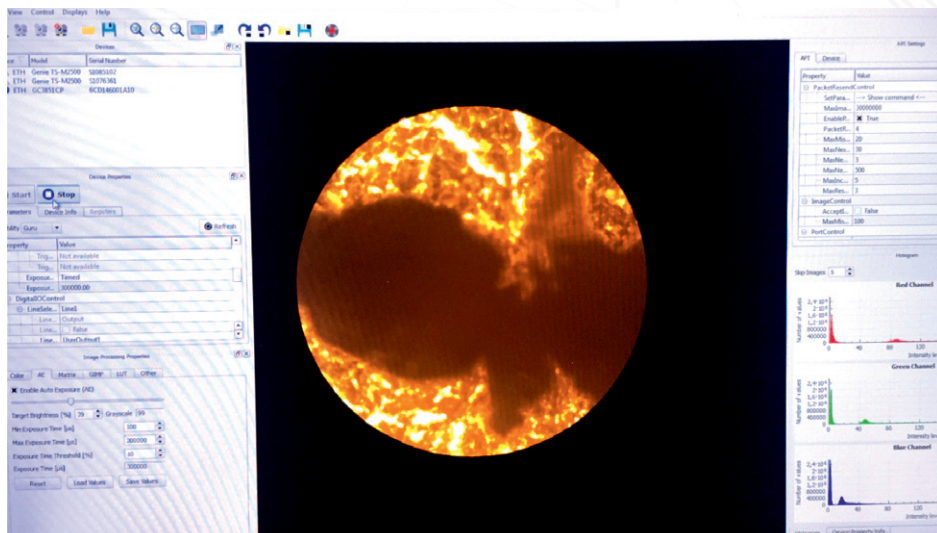


### FEATURES

- › Olivine sand batch quantity automatically filled to hopper on EAF roof
- › Hopper fitted with water cooled filling gate valve and slag breaker
- › TapEye™ camera with water cooled endoscope monitors tap hole
- › Unit combined with purging, slag breaker and negative pressure measurement
- › Compact solution – designed for tight and hot roof space
- › Furnace mounted solution – accurate positioning of filling / camera monitoring v.s. tap hole

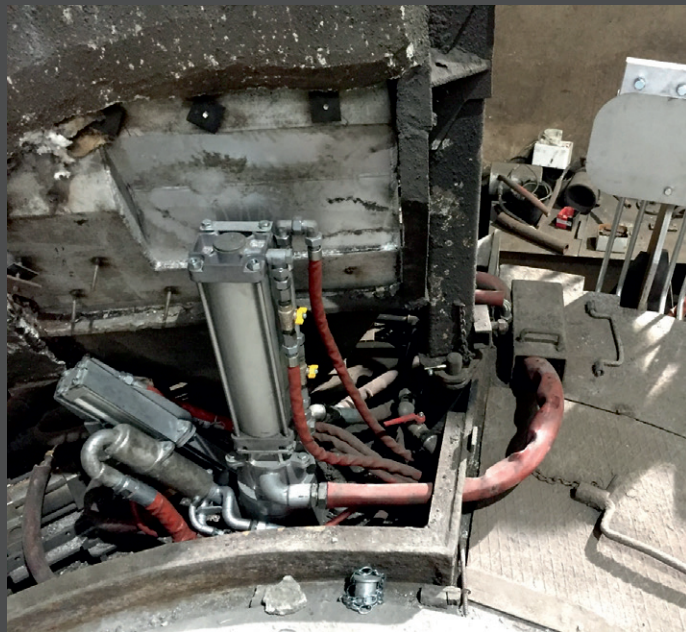
### BENEFITS

- › No need of operator access the furnace
- › Fast inspection and filling process - less than 1 minute for inspection and filling
- › Monitors EBT sand covering by hot heel when levelling EAF after filling
- › Remote control operation
- › Stores pictures of every filling

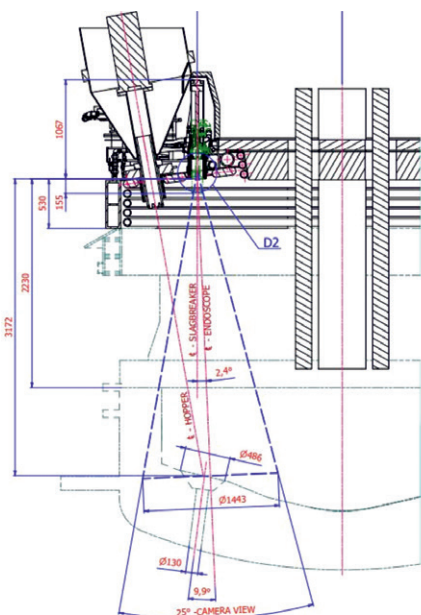




HTT Engineering, spol. s r.o.  
Cimburkova 567/10  
Brno 612 00, Czech Republic  
IC: 03055035 DIC (VAT) CZ03055035



## HTT TAPEYETM SYSTEM WITH CAMERA AND HOPPER ON EAF ROOF WITH / WITHOUT COVER



HTT TAPEYE™ SECTION WITH TAP HOLE POSITION AND CAMERA RANGE

Check video of TapEye OBT / RBT working cycle on [www.htte.eu](http://www.htte.eu)