



HTT Engineering, spol. s r.o.  
Cimburkova 567/10  
Brno 612 00, Czech Republic  
IC: 03055035 DIC (VAT) CZ03055035

## HTT TAPEYE™ EBT

### TAP HOLE AUTOMATIC FILLING SYSTEM

Safe and fast way to inspect and fill EBT tap hole

#### FEATURES

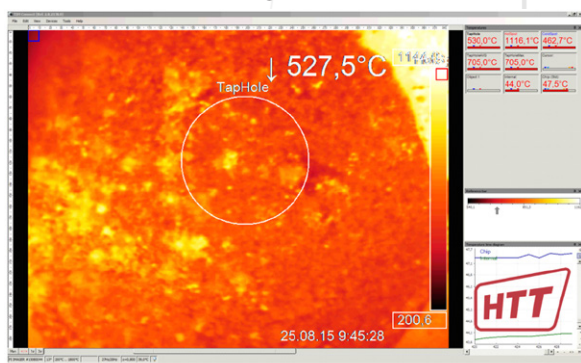
- › Olivine sand batch quantity automatically filled to pneumatic pressure vessel or gravity hopper
- › Sand batch transported to furnace hopper directly on EBT platform
- › Telescopic hopper with Chute and camera to monitor tap hole after tapping and during filling
- › EBT panel hole with slag breaking – self-cleaning opening features
- › Furnace hopper fitted with water-cooled knife gate to fill the sand automatically after inspection by camera
- › Furnace mounted solution – accurate positioning of filling chute v.s. tap hole

#### BENEFITS

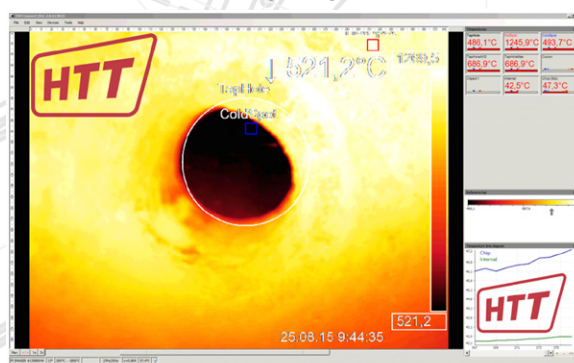
- › No need of operator access to EBT panel
- › Fast inspection and filling process + less than 1 minute for inspection and filling
- › Monitors vortex formation during end of tapping
- › Monitors EBT sand covering by hot heel when levelling EAF after filling
- › Remote control operation
- › Stores pictures of every filling



TAP HOLE FILLED

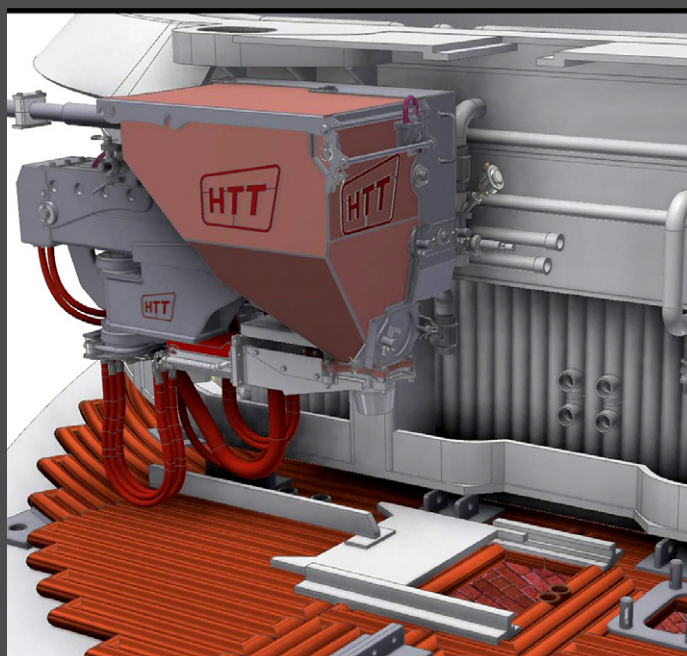


TAP HOLE CLEAR

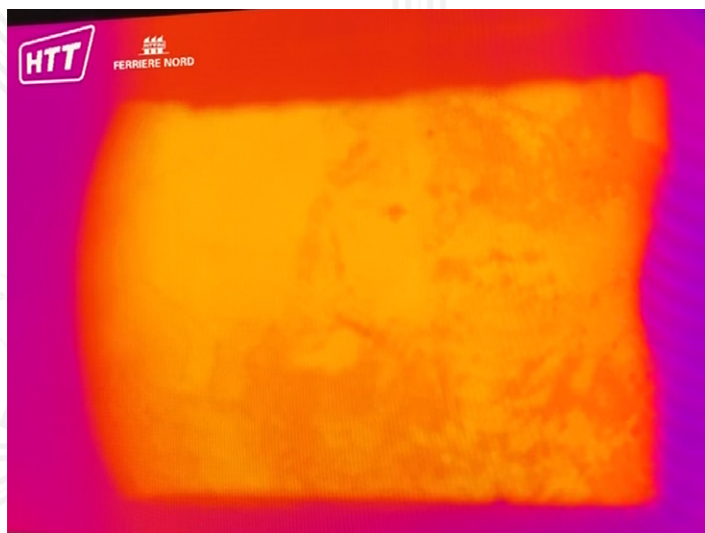
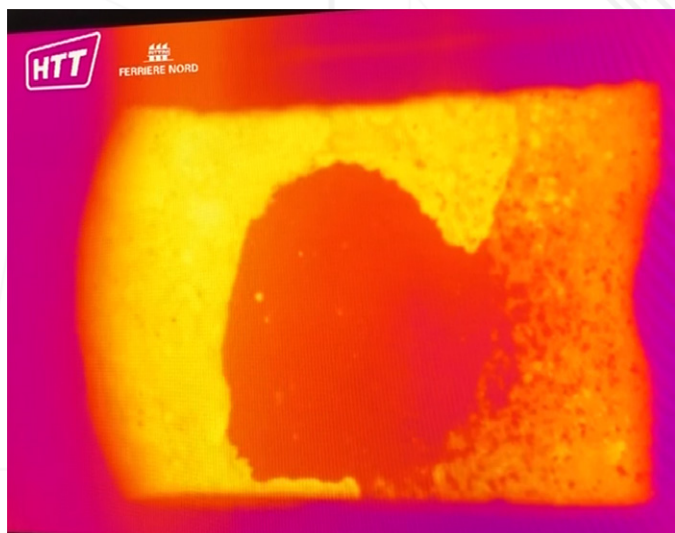




HTT Engineering, spol. s r.o.  
Cimburkova 567/10  
Brno 612 00, Czech Republic  
IC: 03055035 DIC (VAT) CZ03055035



## HTT TAPEYE™ HOPPER WITH INTERGRATED CAMERA AND FILLING VALVE



OPERATOR SCREEN DURING / AFTER HOT HEEL COVERING OF EBT SAND

Check video of TapEye working cycle on [www.htte.eu](http://www.htte.eu)